

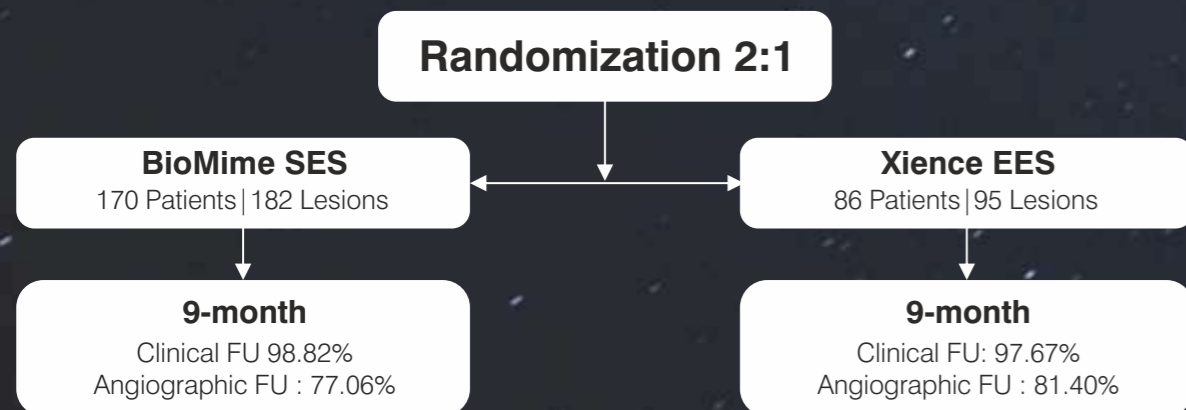
**meriT Trails:**  
Consistent clinical safety & efficacy in more than 1650 patients up to 5 years.

| meriT-I  | meriT-II   | meriT-III  |
|--|--|--|
| <ul style="list-style-type: none"> <li>Single center, FIM</li> <li>30 Patients(30Lesions)</li> <li>8-month angiographic FU</li> <li>2-year clinical FU</li> </ul> <p><b>Key results (1-yr. n=28)</b></p> <ul style="list-style-type: none"> <li>▲ B2/C: 76.7%</li> <li>▲ MACE: 0%</li> <li>▲ TLR: 0%</li> <li>▲ ST: 0%</li> </ul> <p>1-year: Dani S, Costa RA, Joshi H, et al. EuroIntervention 2013;9:493-500</p> | <ul style="list-style-type: none"> <li>Multicenter (11 centers)</li> <li>250 patients(355 lesion)</li> <li>8-month angiographic FU</li> <li>5-year clinical FU</li> </ul> <p><b>Key results (1-yr. n=214)</b></p> <ul style="list-style-type: none"> <li>▲ B2/C: 63.4%</li> <li>▲ MACE: 8.9%</li> <li>▲ TLR: 6.1%</li> <li>▲ ST: 0.5%</li> </ul> <p>1-year: Seth A, Costa RA, Kaul U, et al. Asialntervention 2016;2:19-27</p> | <ul style="list-style-type: none"> <li>Multicenter (15 centers)</li> <li>1161 patients( 1312 lesions)</li> <li>Real-world registry</li> <li>1-year clinical FU</li> </ul> <p><b>Key results (1-yr.)</b></p> <ul style="list-style-type: none"> <li>▲ 41.1% diabetics</li> <li>▲ 52.5 % hypertensive</li> <li>▲ MACE: 2.35%</li> <li>▲ TLR: 0.5%</li> <li>▲ ST: 0.1%</li> </ul> <p>1-year: Jain RK, Chakravarthi P, Shetty R, et al. Indian Heart J 2016;68:599-603</p> |

### meriT-V RCT Non-Inferiority of BioMime SES versus XIENCE EES Proven

Prospective | Randomized | Multicenter Trial

12 sites in Europe (Netherlands, Belgium, UK, Spain, Latvia, Macedonia, Czech Republic & Poland) and 3 sites in Brazil



| Clinical Outcomes       | 9-month (n=252)     |                   |
|-------------------------|---------------------|-------------------|
|                         | BioMime SES (n=168) | XIENCE SES (n=84) |
| <b>MACE</b>             | <b>5 (2.98%)</b>    | <b>6 (7.14%)</b>  |
| Cardiac Death           | 0                   | 0                 |
| MI                      | 1 (0.60%)           | 4 (4.76%)         |
| ID-TLR                  | 4 (2.38%)           | 2 (2.38%)         |
| ID- TVR (non-TLR)       | 0                   | 0                 |
| <b>Stent Thrombosis</b> | <b>0</b>            | <b>0</b>          |

Source : Abizaid AA, Kedev S, Kedhi E, et al. Eurontervention 2018; 14 : 21207-e14.

## BioMime™ TECHNICAL SPECIFICATIONS

**STENT**

|                     |  |
|---------------------|--|
| Stent Material      | : Cobalt Chromium (L605)                         |
| Strut Thickness     | : 65µm (0.065mm or 0.026")                       |
| Stent Diameter (mm) | : 2.00, 2.25, 2.50, 2.75, 3.00, 3.50, 4.00, 4.50 |
| Stent Length (mm)   | : 8, 13, 16, 19, 24, 29, 32, 37, 40, 44, 48      |
| Mean Recoil         | : 3.38%  |
| Mean Foreshortening | : 0.29%  |

**DRUG/POLYMER**

|                      |   |
|----------------------|---|
| Drug                 | : Sirolimus                                   |
| Equivalent Drug Dose | : 1.25 µg/ mm <sup>2</sup>                    |
| Polymer              | : Biodegradable & Biocompatible (PLLA + PLGA) |

**DELIVERY SYSTEM**

|  |                                    |
|--|------------------------------------|
| Delivery System  | : Rapid Exchange                   |
| Nominal Pressure   | : 9 atm (Refer IFU)                |
| Rated Burst Pressure   | : Rated Burst Pressure: 14/16 atm* |
| *RBP 14 atm for 4.50 mm diameter, all lengths.                               |                                    |
| *RBP 14 atm for all diameter with length >40mm. (Refer IFU for more details) |                                    |
| Balloon Overhang   | : ≤ 0.5 mm                         |
| Shaft Outer Diameter   | : Proximal: 2.13 F                 |

|   |                                       |
|---|---------------------------------------|
| Radiopaque Markers  | : Two Platinum / Iridium Markers      |
| Usable Catheter Length  | : 142 cm (Refer IFU for more details) |
| Shaft Outer Profile   | :                                     |
| Proximal 1.98F (All balloon Dia with length <41mm)                            | :                                     |
| Proximal 2.13F (All balloon Dia with length >41mm)                            | :                                     |
| Distal 2.4F (2.00 mm Dia with length <41mm)                                   | :                                     |
| Distal 2.7F (2.00 mm Dia with length > 41mm, 2.25 to 4.50 mm Dia; all length) | :                                     |
| Guide Catheter Compatibility  | : 5F (Min. I. D. 0.056" / 1.42 mm)    |
| Tip Entry Profile   | : 0.016"                              |
| <b>Crossing Profile</b>   | : <b>Stent Diameter</b>               |

| Stent Diameter | Crossing Profile |
|----------------|------------------|
| 2.00 mm        | 0.83mm/0.033"    |
| 2.25 mm        | 0.85mm/0.033"    |
| 2.50 mm        | 0.91mm/0.036"    |
| 2.75 mm        | 0.98mm/0.039"    |
| 3.00 mm        | 0.99mm/0.039"    |
| 3.50 mm        | 1.06mm/0.042"    |
| 4.00 mm        | 1.16mm/0.046"    |
| 4.50 mm        | 1.19mm/0.047"    |

Max. Guidewire : 0.014" (0.36)

## BioMime™ ORDERING INFORMATION

| Dia/Length | 8 mm     | 13 mm    | 16 mm    | 19 mm    | 24 mm    | 29 mm    |
|------------|----------|----------|----------|----------|----------|----------|
| 2.00 mm    | -        | BIO20013 | BIO20016 | BIO20019 | BIO20024 | BIO20029 |
| 2.25 mm    | BIO22508 | BIO22513 | BIO22516 | BIO22519 | BIO22524 | BIO22529 |
| 2.50 mm    | BIO25008 | BIO25013 | BIO25016 | BIO25019 | BIO25024 | BIO25029 |
| 2.75 mm    | BIO27508 | BIO27513 | BIO27516 | BIO27519 | BIO27524 | BIO27529 |
| 3.00 mm    | BIO30008 | BIO30013 | BIO30016 | BIO30019 | BIO30024 | BIO30029 |
| 3.50 mm    | BIO35008 | BIO35013 | BIO35016 | BIO35019 | BIO35024 | BIO35029 |
| 4.00 mm    | BIO40008 | BIO40013 | BIO40016 | BIO40019 | BIO40024 | BIO40029 |
| 4.50 mm    | BIO45008 | BIO45013 | BIO45016 | BIO45019 | BIO45024 | BIO45029 |

| Dia/Length | 32 mm    | 37 mm    | 40 mm    | 44 mm    | 48 mm    |
|------------|----------|----------|----------|----------|----------|
| 2.00 mm    | BIO20032 | BIO20037 | BIO20040 | BIO20044 | BIO20048 |
| 2.25 mm    | BIO22532 | BIO22537 | BIO22540 | BIO22544 | BIO22548 |
| 2.50 mm    | BIO25032 | BIO25037 | BIO25040 | BIO25044 | BIO25048 |
| 2.75 mm    | BIO27532 | BIO27537 | BIO27540 | BIO27544 | BIO27548 |
| 3.00 mm    | BIO30032 | BIO30037 | BIO30040 | BIO30044 | BIO30048 |
| 3.50 mm    | BIO35032 | BIO35037 | BIO35040 | BIO35044 | BIO35048 |
| 4.00 mm    | BIO40032 | BIO40037 | BIO40040 | BIO40044 | BIO40048 |
| 4.50 mm    | BIO45032 | BIO45037 | BIO45040 | BIO45044 | BIO45048 |

Contact your country local Meril sales representative for availability of sizes highlighted in Yellow

BioMime™ is a registered trademark of Meril Life Sciences Pvt. Ltd.



More to Life

**Manufacturer**  
**Meril Life Sciences Pvt. Ltd.**  
Survey No. 135/139, Bilakhia House,  
Muktanand Marg, Chala,  
Vapi 396 191,  
Gujarat, India.  
T: +91 260 240 8000

**Meril Life Sciences Pvt. Ltd.**  
301, A - Wing, Business Square,  
Chakala, Andheri Kurla Road,  
Andheri East, Mumbai 400 093  
T: + 91 22 39350700  
F: + 91 22 39350777  
E: askinfo@merillife.com

**Meril, Inc.**  
2436 Emrick Boulevard,  
Bethlehem, PA - 18020  
T: + 610 500 2080  
F: + 610 317 1672

**Meril South America**  
Doc Med LTDA Al. dos Tupiniquins,  
1079 - Cep. 04077-003 - Moema,  
Sao Paulo, Brazil.  
T: +55 11 3624 5935  
F: +55 11 3624 5936

**Meril GmbH.**  
Bornheimer Strasse 135-137,  
D-53119 Bonn,  
Germany.  
T: +49 228 7100 4000  
F: +49 228 7100 4001

**Meril Tibbi Cihazlar**  
Meril Tibbi Cihazlar İmalat ve Ticaret A.Ş.  
İçeranköy Mah. Çetinkaya Sok. Prestij Plaza No:28  
Kat:4 Ataşehir, 34752  
İstanbul / Turkey  
T: +90 216 641 44 24  
F: +90 216 641 44 25

**Meril China Co. Ltd.**  
Room 2301B, 23F, Lixin Plaza,  
No 90, South Hubin Road,  
Xiamen China  
T: 0086-592-5368505  
F: 0086-592-5368519

**Meril SA Pty. Ltd.**  
102, 104, S101 and S102,  
Boulevard West Office Park,  
142 Western Service Road,  
Erf 813 Woodmead Extension 17  
Sandton, Johannesburg – 2191  
South Africa  
T: +27 11 465-2049  
F: +27 86 471 7941

**Meril Medical LLC.**  
Nauchnyi Proezd 19,  
Moscow, Russia – 117 246.  
Office - +7 495 772 7643

**EU representative.**  
Obelis S.A.Bd, General Wahis 53,  
1030, Brussels, Belgium.  
T : +32 2 732 5954  
F : +32 2 732 6003  
E mail@obelis.net

E askinfo@merillife.com  
W www.merillife.com



For the use of a Registered Medical Practitioner of Hospital or Laboratory only

BIO-1/BROCHURE 003/MLS/202006007/GLOBAL

**biomime™**  
Sirolimus Eluting Coronary Stent System

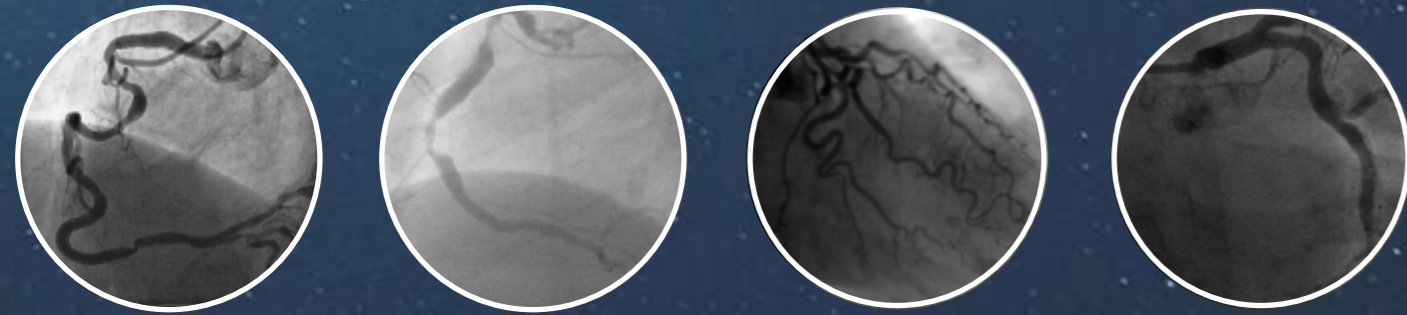
**Delivered As Desired**



# biomime™

## Sirolimus Eluting Coronary Stent System

With BioMime™, now complex lesions can be treated with ease. Achieves acute procedural success with proven long term clinical safety and efficacy.



Hybrid cell design comprising of an intelligent mix of open and close cells resulting in excellent radial strength with a high flexibility



Reinforced hypo tube for improved hub-to-tip force transfer

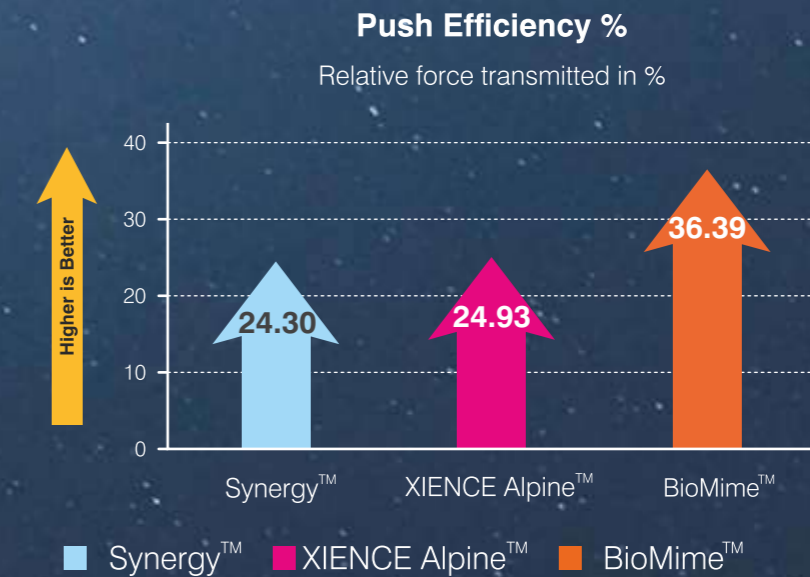
0.016" Tip Entry Profile



Elongated distal tip:  
 Biomime Xepedient :  $3.5 \pm 0.5$  mm for balloon diameter 2.25 mm to 4.50 mm,  
 Taper balloon and  $5.00 \pm 0.5$  mm for balloon diameter 2.00 mm  
 Biomime Lineage :  $7.00 \pm 0.5$  mm  
 Biomime Natec :  $5.20 \pm 1.00$  mm

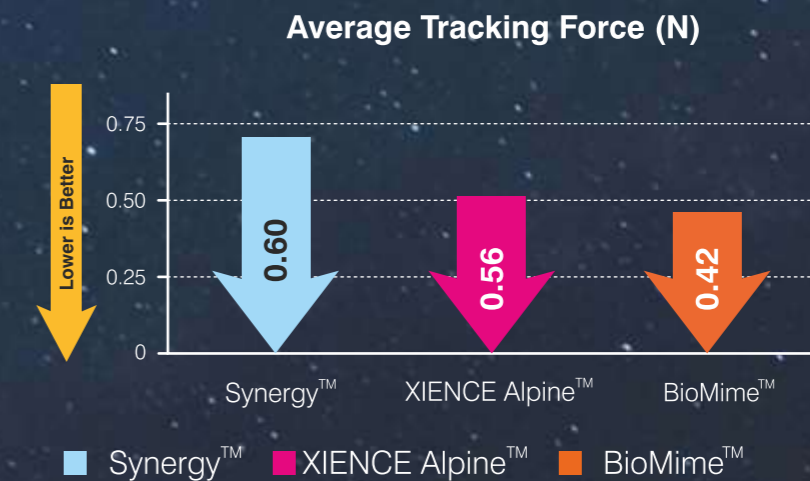
New Monolithic Delivery System for enhanced pushability and excellent kink resistance

### Improved Pushability from hub-to-tip\*



**50%**  
Better Push Efficiency

### Improved Trackability in difficult anatomies\*



**30%**  
Lesser Tracking Force<sup>s</sup>

\* Tests performed by and data on file at Meril Life Sciences Pvt. Ltd. XIENCE Alpine™ is a trademark of Abbott Laboratories. Synergy™ is a trademark of Boston Scientific.  
<sup>s</sup> Test performed using Lineage delivery system.

### Proven BioMime™ Stent Design

- 65µm Strut Thickness for All Sizes
- Biodegradable Polymer Coating
- Sirolimus Drug Elution (1.25µg/mm<sup>2</sup>)
- Morphology Mediated Expansion

