

# Optional Accessories



Ear Irrigation Kit



Operating Otoscope



Medical Monitor



Endoscope Sterilizer



Wireless Head Light



View Box



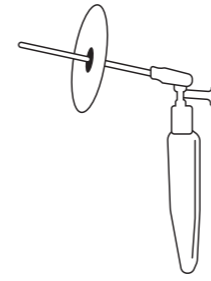
Powder Sprayer



Eustacure



Ear Dryer



CWS & ADS



Disposable Suction Tip



Disposable Spray Tip



Microscope



Illumination



Pen Light



Portable Pen Light



Consumable parts for Suction Gun



Doctor's Stool Chair

# ENT Endoscopy Visual System VS-3CL



## Features

- Specialized in ENT Surgery using the 3CMOS Visual System
- High Quality LED Light Source
- Light Source CCT 6000K, CRI 90
- Variable Light Intensity

## Specifications

|                   |  |
|-------------------|--|
| Image Sensor      | 1/3" 3CMOS FHD   |
| Lens              | 15~25mm C-mount  |
| Scan Type         | Progressive scan   |
| Image Resolution  | 1,920 x 1,080  |
| Aspect Ratio      | 16:9   |
| Capture Mode      | 1/AVI  |
| Frame Rate        | 60p  |
| Recording Media   | USB memory, SD-CARD  |
| Video Output      | HD-SDI (2Port), DVI (1Port)  |
| Voltage           | 110-230V   |
| Frequency         | 50/60Hz  |
| Power Consumption | Camera: Approx. 50W,<br>Light Source: Approx. 70W  |
| Weight            | <b>Main Body &amp; Light Source :</b> Approx. 3kg<br><b>Camera :</b> Approx. 100g  |
| Dimension         | <b>Main Body &amp; Light Source :</b><br>260mm (W) x 270mm (D) x 71mm (H) ± 10 %<br><b>Camera :</b><br>49mm(W) x 131mm(D) ± 10 % |

## Standard Accessories

|                      |   |
|----------------------|---|
| 3CMOS Full-HD Camera | 1 |
| 3 Way Foot Switch    | 1 |
| Light Guide          | 1 |
| Video Cable          | 1 |
| Power Cord           | 1 |

## Optional Accessories

Medical Monitor  
Monitor Holder  
Cart  
Camera Holder  
Endoscope

# ENT Endoscopy Visual System VS-DUAL



## Features

- Auto Change Channel System
- AWB (Auto White Balance) Function
- MWB (Manual White Balance) Mode
- IRIS 21 STEPS
- AGC ( Auto Gain Control) Function (on/off/up)
- SHARP 10 Steps
- DNR (Digital Noise Reduction) 11 Steps
- Black 10 Steps
- HUE 10 Steps
- LUXSEN Function (on/off)
- USB Memory

## Specifications

|                   | FHD              | HD                                       |
|-------------------|------------------|--|
| Image Sensor      | 1/3" CMOS FHD    | 1/3" CMOS HD                             |
| Scan Type         | Progressive Scan |  |
| Image Resolution  | 1,920 x 1,080    | 1,280 x 720                              |
| Capture Mode      | 1/ 2/ 4/ AVI     |  |
| Aspect Ratio      | 16:9             |  |
| Resolution (H)    | 1000TVL          | 800TVL                                   |
| Video Output      | HDMI (2ports)    |  |
| Voltage           | 220V             |  |
| Frequency         | 50/60Hz          |  |
| Power Consumption | 120VA            |  |
| Weight            | Main Body        | Approx. 6.5kg                            |
|                   | Camera           | Approx. 300g                             |
| Dimension         | Main Body        | 325mm (L) x 373mm (D) x 150mm (H) ± 10 % |
|                   | Camera           | 55mm(W) x 120mm(D) x 55mm (H) ± 10 %     |

## Attached to ENT Unit



## Standard Accessories

|                   |   |
|-------------------|---|
| Camera (FHD / HD) | 2 |
| Foot Switch       | 1 |
| Light Guide       | 1 |
| Video Cable       | 1 |
| S-Video Cable     | 1 |
| Power Cord        | 1 |

## Optional Accessories

Medical Monitor  
Monitor Holder  
Customized Shelf  
Cart  
Camera Holder  
Endoscope

# NET-260SLCB

FHD



HD



SD



## Features

### FHD / HD

- Attachable to ENT Unit
- Auto Change Channel System
- AWB (Auto White Balance) Function
- MWB(Manual White Balance) Mode
- IRIS 21 STEPS
- AGC (Auto Gain Control) Function (on/off/up)
- SHARP 10 Steps
- DNR (Digital Noise Reduction)11 Steps
- Black 10 Steps
- HUE 10 Steps
- LUXSEN Function (on/off)
- USB Memory

### SD

- Attachable to ENT Unit
- AWB (Auto White Balance) Function
- AGC(Auto Gain Control) Function(on/off/up)
- Auto Color Modification
- USB Memory

## Specifications

|                         | FHD              | HD                            | SD                 |
|-------------------------|------------------|-------------------------------|--------------------|
| Image Sensor            | 1/3" CMOS FHD    | 1/3" CMOS HD                  | 1/3" CCD Super HAD |
| Scan Type               | Progressive Scan |                               | Interlaced Scan    |
| Image Resolution        | 1,920 x 1,080    | 1,280 x 720                   | 976 x 494          |
| Capture Mode            | 1/ 2/ 4/ AVI     |                               |                    |
| Resolution (H)          | 1000TVL          | 800TVL                        | 670TVL             |
| Video Output            | HDMI (2ports)    |                               | HDMI               |
| Voltage                 | 220V             |                               |                    |
| Frequency               | 50/60Hz          |                               |                    |
| Power Consumption       | 310mA / +6V      | 120VA                         | 270VA              |
| Weight                  | Main Body        | Approx. 4kg                   |                    |
|                         | Camera           | Approx. 220g                  |                    |
| Dimension               | Main Body        | 165(W) x 326(D) x 145(H) mm   |                    |
|                         | Camera           | 46(W) x 127.4(D) x 55.6(H) mm |                    |
| PC Connection           | 0                | 0                             | X                  |
| USB Still Image Capture | 0                | 0                             | 0                  |
| USB Video Recording     | 0                | 0                             | X                  |

## Standard Accessories

|                        |   |
|------------------------|---|
| Camera (FHD / HD / SD) | 1 |
| Foot Switch            | 1 |
| Light Guide            | 1 |
| Video Cable            | 1 |
| S-Video Cable          | 1 |
| Power Cord             | 1 |

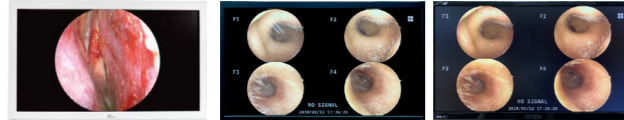
## Optional Accessories

- Medical Monitor
- Monitor Holder
- Camera Holder
- Endoscope

# Optional Accessories

## Monitor

| Model       | 27"     | 23.8"     | 24"       |
|-------------|---------|-----------|-----------|
| Application | Surgery | Diagnosis | Diagnosis |



## Flexible Nasopharyngoscope

| Model          | NET-300NS    | NET-340NS    |
|----------------|--------------|--------------|
| Diameter       | 2.8mm        | 3.4mm        |
| Working Length | 300mm        | 300mm        |
| Angle of View  | 70°          | 70°          |
| Bending        | up/down 150° | up/down 150° |



## Endoscope

| Category        | Specification     | Standard | RLP |
|-----------------|-------------------|----------|-----|
| Otoscope        | 0°, 3.0mm, 60mm   | 0        | X   |
| Otoscope        | 0°, 3.0mm, 90mm   | 0        | X   |
| Otoscope        | 0°, 2.7mm, 110mm  | 0        | X   |
| Otoscope        | 0°, 4.0mm, 50mm   | 0        | X   |
| Sinoscope       | 0°, 4.0mm, 175mm  | 0        | X   |
| Sinoscope       | 30°, 4.0mm, 175mm | 0        | 0   |
| Sinoscope       | 70°, 4.0mm, 175mm | 0        | 0   |
| Laryngoscope    | 70°, 5.0mm, 175mm | 0        | 0   |
| Laryngoscope    | 90°, 8.0mm, 175mm | 0        | 0   |
| HD Otoscope     | 0°, 4.0mm, 185mm  | 0        | X   |
| HD Sinoscope    | 30°, 4.0mm, 185mm | 0        | 0   |
| HD Sinoscope    | 45°, 4.0mm, 185mm | 0        | 0   |
| HD Laryngoscope | 70°, 4.0mm, 185mm | 0        | 0   |



## Cart

|                        |                      |
|------------------------|----------------------|
| Dimensions (W x D x H) | 328 x 365 x 1,200 mm |
| Weight                 | 40kg                 |



## ENT Chair NET-1500



NET-1500A



NET-1500D



NET-1500E

| Model                       | 1500A                      | 1500D                      | 1500E                      |
|-----------------------------|----------------------------|----------------------------|----------------------------|
| Backrest Inclination        | 0~95°                      | 0~95°                      | 0~60°                      |
| Base Diameter               | 580mm                      | 550mm                      | 550mm                      |
| Seat Elevation Stroke       | 520-820mm                  | 550-850mm                  | 500-800mm                  |
| Rotating Angle              | 360°                       | 360°                       | 360°                       |
| Chair Rotation              | Auto                       | Manual                     | Manual                     |
| Up/Down Adjustment          | Auto                       | Auto                       | Auto                       |
| Forward/Backward Adjustment | Auto                       | Auto                       | Manual                     |
| Auto Return                 | 0                          | 0                          | X                          |
| Headrest Adjustment         | 0                          | 0                          | X                          |
| Armrest Rotation            | 0                          | 0                          | X                          |
| Seat Material               | Artificial Leather         | Artificial Leather         | Artificial Leather         |
| Color                       | Blue                       | Gray                       | Gray                       |
| Voltage, Frequency          | 220V, 60Hz                 | 230V,50/60Hz               | 230V,50/60Hz               |
| Dimension (mm)              | 990(W) X 600(D) X 1,450(H) | 780(W) X 585(D) X 1,180(H) | 780(W) X 585(D) X 1,180(H) |
| Weight                      | 95 kg                      | 90kg                       | 75kg                       |
| Consumption Power           | 545VA                      | 600VA                      | 600VA                      |
| ESL (Cylinder life time)    | 10 years                   | 10 years                   | 10 years                   |
| Foot Switch                 | 0                          | 0                          | 0                          |